

Incipit: Niels Poulsen - Viby 1876

Nº 1 Vals

JM 1870 ark 9

Nº 11 Dagmar Vals af Simke

Nº 2 Salon Galop

Nº 12 Foråret Vals af H.C. Lumby

JM 1870 ark 10 jvf LO 1880 II w "10"

Nº 3 Mazurka

JM 1870 ark 5

Nº 13 Polka Somer af H.C. Lumby

JM 1870 ark 10 jvf LO 1880 II w "11" NP. 77 ark 2

Nº 4 Vals

JM 1870 ark 6

Nº 14 Mazurka I: Efteråret: I H.C. Lumby

JM 1870 ark 10 jvf LO 80^e tillæg

Nº 5 Polka

JM 1870 ark 9

Nº 15 Gallop I: Vinteren: I H.C. Lumby

JM 1870 ark 10 jvf LO 80^e tillæg

Nº 6 Laura Vals

JM 1870 ark 7

Nº 16 Vals af Carl Lumby

Nº 7 Til Boserup Vals

jvf Kryger ark 2 Witttrup w 60 JM 1870 ark 9

Nº 17 Polka

Nº 8 Mazurka

jvf HP 1958 w 15

Nº 18 Mazurka af Carl Lumby

Reel (?)

Jfr. JM 70 (ark 3) # Mastzon

Nº 19 Galop

Nº 9 Amager Polka af H.C. Lumby (1849)

JM 1870 ark 10 jvf LO 80 tillæg

Nº 20 Eriksens Salon Polka af Eriksen

Nº 10 Steyrischer Kuckuk Polka af Kneblsberger

andlers jvf LO Witt w 44 NCA 96
forspil

Nº 21 Jensino Polka

(fortsættis-)

Niels Poulsen 1876 - fortsat (ARK 2)

N:22 Lottes Dpd

Musical notation for N:22 Lottes Dpd. Includes key signature of two sharps and 2/4 time signature. Source: jvf LO 1894.

N:32 Reilander Polka

Musical notation for N:32 Reilander Polka. Includes key signature of two sharps and 2/4 time signature. Source: jvf L.O. 1894-1.

N:23 Ecosaise

Musical notation for N:23 Ecosaise. Includes key signature of two sharps and 2/4 time signature. Source: JM 1870 ark 8 w 43.

N:33 Azarine Mazurka

Musical notation for N:33 Azarine Mazurka. Includes key signature of two sharps and 3/4 time signature. Source: jvf L.O. 1894-1.

N:24 Riilender Polka

Musical notation for N:24 Riilender Polka. Includes key signature of two sharps and 2/4 time signature. Source: jvf L.O. 1894 w 3.

N:34 Berliner Vausehall Polka

Musical notation for N:34 Berliner Vausehall Polka. Includes key signature of two sharps and 2/4 time signature. Source: forspil.

N:25 Viner Vals

Musical notation for N:25 Viner Vals. Includes key signature of two sharps and 3/4 time signature. Source: forspil.

N:35 Leider Vals

Musical notation for N:35 Leider Vals. Includes key signature of one flat and 3/4 time signature.

N:26 Galop

Musical notation for N:26 Galop. Includes key signature of two sharps and 2/4 time signature. Source: jvf NP 77 ark 2 JM 1870 ark 10.

N:36 Polka

Musical notation for N:36 Polka. Includes key signature of two sharps and 2/4 time signature.

Hr. Musiker N Poulsen Galop p. ...

Froken Gertrud Niels Larsen Madskov
Marie Poulsen

N:27 Champagn Galop

Musical notation for N:27 Champagn Galop. Includes key signature of two sharps and 2/4 time signature. Source: jvf Sweden ark 6 L.O. w:tt 86 L.O. 80 I w "16".

N:38 Dalkullen Polka

Musical notation for N:38 Dalkullen Polka. Includes key signature of two sharps and 2/4 time signature. Source: JM 1870 ark 10.

N:28 Hopsa

Musical notation for N:28 Hopsa. Includes key signature of two sharps and 2/4 time signature.

N:39 Damen Galop

Musical notation for N:39 Damen Galop. Includes key signature of two sharps and 2/4 time signature.

N:29 Erindrings Vals

Musical notation for N:29 Erindrings Vals. Includes key signature of two sharps and 3/4 time signature. Source: jvf LO 152 w 110 Lange 48 JM 1870 ark 7.

N:40 Figaro Galop

Musical notation for N:40 Figaro Galop. Includes key signature of two sharps and 2/4 time signature.

Hr. Musiker N Poulsen

Niels Larsen Madskov
Frojen Gertrud Marie Poulsen

N:30 Polka af den skønne Helmu

Musical notation for N:30 Polka af den skønne Helmu. Includes key signature of two sharps and 2/4 time signature. Source: jvf Lange w 58 JM 1870 ark 1.

N:42 Minerva Galop

Musical notation for N:42 Minerva Galop. Includes key signature of one flat and 2/4 time signature. Source: jvf K. w II w 50.

N:31 Rigl

Musical notation for N:31 Rigl. Includes key signature of two sharps and 2/4 time signature. Source: jvf J. Madsen (Hyld) w 2 JM 1870 ark 7 nr 1.

N:43 Polka

Musical notation for N:43 Polka. Includes key signature of two sharps and 2/4 time signature.

Tage 1989

(fortsættelse -)

tilføjet, 2 år yngre

Nr 1
Nr 2
Nr 3
Nr 4

N:44 Tappenstreg Polka

Musical notation for N:44 Tappenstreg Polka

N:52 Galop

Musical notation for N:52 Galop

JM 1870 ark 10

N:45 Polka

Musical notation for N:45 Polka

Store Vibj mark den 20/12 76

Den bog er min Køde Bog for Violin Niels Poulsen

N:46 Vals

Musical notation for N:46 Vals

N:53 Marche

Musical notation for N:53 Marche

N:47 Amager Polka

Musical notation for N:47 Amager Polka

N:54 Polka

Musical notation for N:54 Polka

N:48 Emilie Polka

Musical notation for N:48 Emilie Polka

Witt n: 44 NCA 96

andres end NP 76 n: 9

N:55 Galop

Musical notation for N:55 Galop

Niels' Poulsen Vibj
Niels' Poulsen Vibj

N:56 Mazurka

Musical notation for N:56 Mazurka

JM 1870 ark 10

N:49 Mac Makon Marsch H. Lumby

Musical notation for N:49 Mac Makon Marsch

N:57 Vals

Musical notation for N:57 Vals

JM 1870 ark 10

Jens' Niels'sens
Jens' Poulsen

N:50 Polka

Musical notation for N:50 Polka

N:58 Vals

Musical notation for N:58 Vals

N:59 Albrambas Fodfelisfert (?) Galop af Jensen

Musical notation for N:59 Galop

JM 1870 ark 10

N:51 Vals

Musical notation for N:51 Vals

N:60 Vals Hurtig

Musical notation for N:60 Vals

JM 1870 ark 10

N:51 Pipi Titi Polka

Musical notation for N:51 Pipi Titi Polka

N:61 Brude Vals

Musical notation for N:61 Brude Vals

Vibj mark den 20de Desember 76
Kasils Gård Tjerkeminde

N:62 Mazurka

Musical notation for N:62 Mazurka

(- fortsat -)

Niels Poulsen 1876 - fortsat (ARK 4)

N:63 Trumf Es Galop

N:63 Vals

Musical notation for N:63 Trumf Es Galop and N:63 Vals. Includes a trill (tr.) in the second staff.

N:64 Mazurka

JM 1870 ark 10

N:64 Polka

Musical notation for N:64 Mazurka and N:64 Polka.

N:65 Sang Galop

N:65 Mazurka

Musical notation for N:65 Sang Galop and N:65 Mazurka.

N:66 Rekrut Polka

JM 1870 ark 10

N:66 Hopsa

Musical notation for N:66 Rekrut Polka and N:66 Hopsa.

N:67 Laurence Polka

N:67 Fransk Rigel

Musical notation for N:67 Laurence Polka and N:67 Fransk Rigel.

Kong Elisabeth (2. stemme)

N:68 Catinka

Musical notation for Kong Elisabeth (2. stemme) and N:68 Catinka. Includes a first ending (1st HP beg. ark 3).

N:68 Sjampange Galop

N:68 Polka

joh Straw Op 210

1st HP beg ark 3

Musical notation for N:68 Sjampange Galop and N:68 Polka.

Polka

N:69 Tyroler Vals

Musical notation for Polka and N:69 Tyroler Vals. Includes a first ending (1st LO 1894 w 2).

N:69 Hopsa

N:69 Polka

Musical notation for N:69 Hopsa and N:69 Polka. Includes a first ending (1st forspil).

N:70 Polka

Niels Poulsen

Musical notation for N:70 Polka and Niels Poulsen.

N:71 Vals

N:71 Vals

Musical notation for N:71 Vals and N:71 Vals.

N:72 Vals

Musical notation for N:72 Vals and N:72 Vals.

JM 70 (ark 3)

(- fortsættes -)

Tage 1989

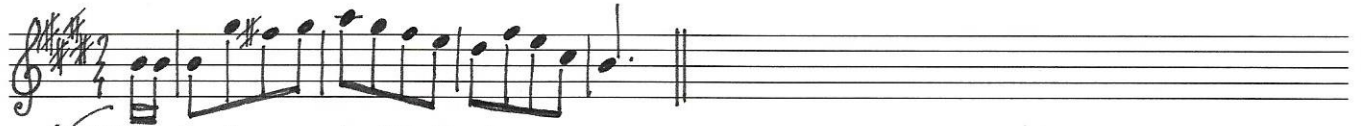
Niels Poulsen 1876 - fortsat (ARK 5)

Nr 86 Aarhus Tappenstreg



Nr 87 Galop

ivf HP 58 ark 2



Nr 88 Tyroler Hopsa af N.C. Kristensen



Polka

iv Smed (ark 9)
NCA n 1, Birk ark 2 NP82 u III



SLUT

