



Ser nye
Engelske Dandsse
af
GROTH

17.- 167.

DA Box



DET KONGELIGE BIBLIOTEK



130014564420



Sex nye
Engelske Dandse,
satte for
2 Violiner, 2 Fløiter eller Clarinetter og Basse.

Componerede
af
F. C. Groth.

~~~~~  
Lourene  
af  
N. Schall.

---

Kiøbenhavn 1795.

Trykt hos Hofbogtrykkerne N. Møller og Søn.

Sej nye  
Engelske Dandse,

fatte for

2 Violiner, 2 Fløiter eller Clarinetter og Basse.

Componerede

af

F. E. Groth.

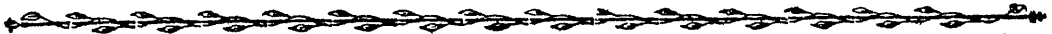
Lourene

af

N. Schall.

Kjøbenhavn 1795.

Trykt hos Hofbogtrykkerne N. Møller og Søn.



No. 13.

1. Tour. Iste Mr. ball., tager sin Dame en Prision i høire Arm, svinger rundt i samme Stilling.
2. — Mr. ligeledes med 2den D., og D. med 2den Mr.
3. — Iste Par falde af, Mr. valser med 3die D., og D. med 3die Mr.
4. — Mr. og D. stiller sig i Runddeel med øverste Par med Armene bag hinandens Ryg, ball., slipper og dreier sig rundt paa Stedet.
5. 6. — De Dandsende giver Hænderne i Kors, D. gaaer under høire Arm, lader venstre falde ned paa Ryggen, løser op igien, Mr. gaaer ligeledes under høire Arm, og lader venstre falde ned paa Ryggen, alt uden at slippe, forer op i samme Stilling og falde af, enhver paa sin egen Side.

## No. 14.

1. Tour. 1ste Par gjør  $\frac{1}{2}$  Figur, vasser og bliver paa forkeert Side.
2. — Gaaer Moulinet, Mr. med 2den og 3die D., og D. med 2den og 3die Mr.
3. — Mr. stiller sig imellem 2det Par, og D. imellem 3die, gaaer 3 og 3 fra hinanden, vender og gaaer imod hinanden.
4. — Mr. svinger 3die D. med hoire, og D. 2den Mr., dernæst sin egen med venstre Haand, og bliver 2det Par.
5. 6. — 1ste og 2det Par Promenade og Vals i Cirkel.



## No. 15.

1. Tour. 1ste Mr. tager sin Ds. høire Haand med sin venstre, og fører over Hovedet af 2den Mr. og valser, enhver med sin egen.
2. — Mr. ball. med 3die D. og svinger rundt med 2den D., 1ste D. ligeledes med 2den og 3die Mr., bliver paa forkeert Side.
3. — De 3 Par giver høire Haand i Høiden en Moulinet, og venstre Haand neden for en Coronne, ball., slipper og vender sig rundt paa Stedet, enhver for sig.
4. — Samme igien, med venstre Haand øverst.
5. — Alle 3 Par gaaer i Runddeel, een efter anden med Hænderne paa Ryggen.
6. — De Dandsende føre op, falde af paa egen Side.

## No. 16.

1. Tour: 1ste Par valser, og falder af paa forkeert Side.
2. — Mr. valser med 3die D., og D. med 3die Mr., dernæst valser enhver med sin egen.
3. — Gaar 6 rundt og bliver paa forkeert Side imellem.
4. — Stiller sig en Moulinet alle 6 med hoire Haand i Høiden, ball. og vender sig alle til  
hoire Side rundt.
5. — Valser i Cirkel med øversie Par.
6. — Fører op imellem samme og falde forkeert af.

## No. 17.

1. Tour. 1ste og 2det Par gior  $\frac{1}{2}$  Kiæde og svinger  $\frac{1}{2}$  rundt enhver med sin egen.
2. — Samme Tour med 3die Par.
3. — De Dandsende gior  $\frac{1}{2}$  Figur op om 3die Par, valser og bliver paa forkeert Side.
4. — Fører op og falder af paa rette Side.
5. 6. — Gior Kiæde en 6.



## No. 18.

1. Tour. 1ste og 2det Par gjør  $\frac{1}{2}$  Ekubfar og valser.
  2. — Samme Tour tilbage igien.
  3. — 1ste Par gjør  $\frac{1}{2}$  Figur, stiller sig i Linie imellem 2det Par med alle Armene bag om hinandens Ryg.
  4. — Ball. i Linien, slipper, de Dandsende kaster af paa egen Side.
-

No. 13. Engl.

Violino Primo.

The first staff of music for Violino Primo, measures 1-4. It begins with a treble clef, a key signature of one flat (B-flat), and a time signature of 2/4. The first measure contains a whole note chord with a first finger fingering (1) above it. The second measure contains a whole note chord with a first finger fingering (1) above it. The third and fourth measures contain eighth notes. The staff ends with a double bar line.

The second staff of music for Violino Primo, measures 5-8. It continues with a treble clef, a key signature of one flat, and a time signature of 2/4. The first measure contains a whole note chord with a first finger fingering (1) above it. The second measure contains a whole note chord with a second finger fingering (2) above it. The third and fourth measures contain eighth notes. The staff ends with a double bar line.

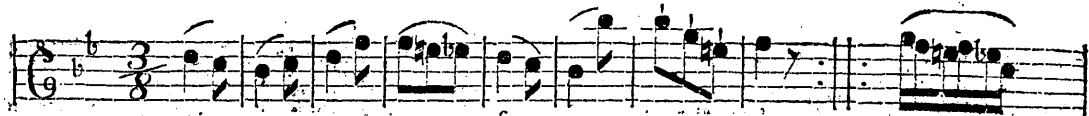
*Clar. Solo.*

The third staff of music for Clarinet Solo, measures 1-4. It begins with a treble clef, a key signature of one flat, and a time signature of 2/4. The first measure contains a whole note chord. The second measure contains a whole note chord. The third and fourth measures contain eighth notes. The staff ends with a double bar line.

The fourth staff of music for Clarinet Solo, measures 5-8. It continues with a treble clef, a key signature of one flat, and a time signature of 2/4. The first measure contains a whole note chord. The second measure contains a whole note chord. The third and fourth measures contain eighth notes. The staff ends with a double bar line.

No. 14. Engl.

Violino Primo.

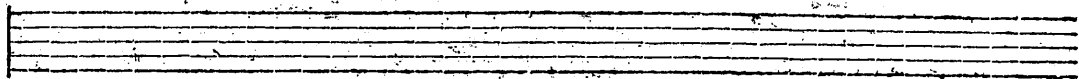


*pia.*

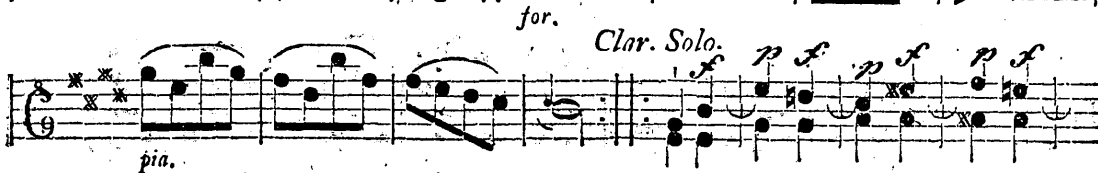
*for.*



*Clar. Solo.*







No. 16. Engl.

Violino Primo.

Violino Primo staff 1. The staff is in G major (one flat) and 3/8 time. It begins with a *pia.* (piano) dynamic marking. The music consists of a series of eighth and sixteenth notes, with some slurs and accents. A *for.* (forte) dynamic marking appears later in the staff. The staff ends with a double bar line.

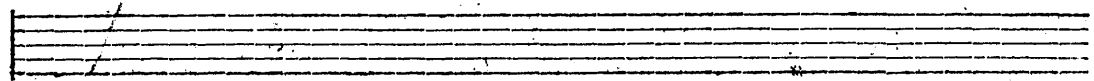
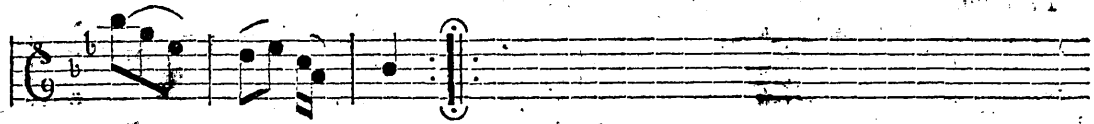
Violino Primo staff 2. This staff continues the melody from the first staff. It features a *his* (harmonic) marking above a slur. The music includes slurs, accents, and a first ending bracket labeled '1' and a second ending bracket labeled '2'. The staff concludes with a double bar line.

Clarinet Solo staff 1. The staff is in G major (one flat) and 3/8 time. It is labeled *Clar. Solo.* at the beginning. The music features a variety of note values, including eighth, sixteenth, and quarter notes, with many slurs and accents. The staff ends with a double bar line.

Clarinet Solo staff 2. This staff continues the clarinet solo. It contains further melodic and harmonic development with slurs and accents. The staff concludes with a double bar line.







No. 13. Engl.

Violino Secondo.

First staff of music, featuring a treble clef, a key signature of one flat (B-flat), and a 3/4 time signature. The staff contains a melodic line with various note values and rests. A bracket above the staff spans the final two measures, with the number '1' above the first measure and '2' above the second measure of the bracketed section.

Second staff of music, featuring a treble clef, a key signature of one flat (B-flat), and a 3/4 time signature. The staff contains a melodic line with various note values and rests, including a prominent eighth-note pattern.

*Cl. Solo.*

Third staff of music, featuring a treble clef, a key signature of one flat (B-flat), and a 3/4 time signature. The staff contains a melodic line with various note values and rests, including a prominent eighth-note pattern.

Fourth staff of music, featuring a treble clef, a key signature of one flat (B-flat), and a 3/4 time signature. The staff contains a melodic line with various note values and rests, including a prominent eighth-note pattern. A double bar line is present at the end of the staff.

*B*

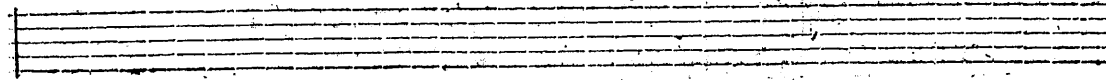
No. 14. Engl.

Violino Secondo.

*pia.* *for.*

*Cl. Solo.*



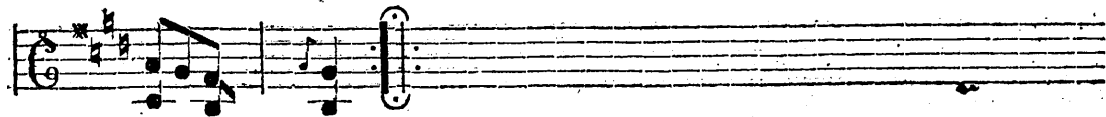


*pia.* *for.*

*Clar. Solo.*

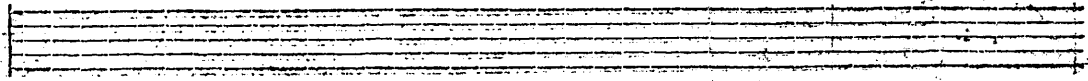
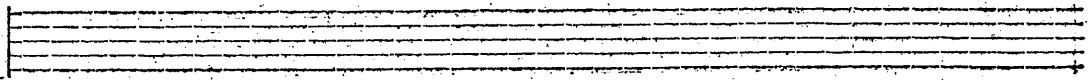
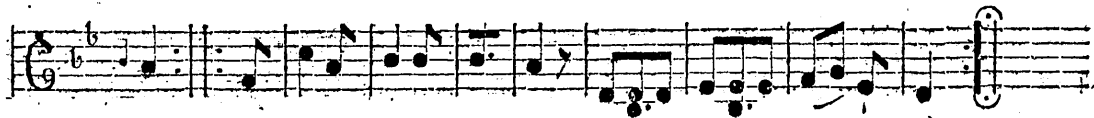
No. 17. Engl.

Violino Secondo.



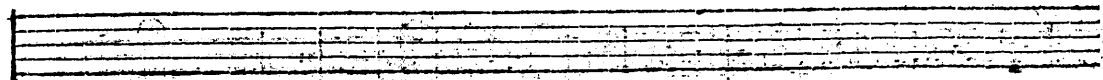
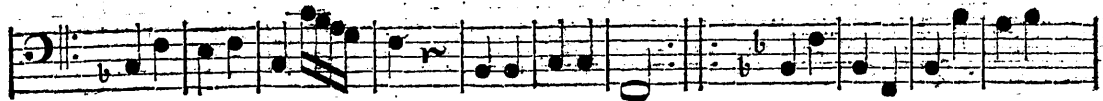
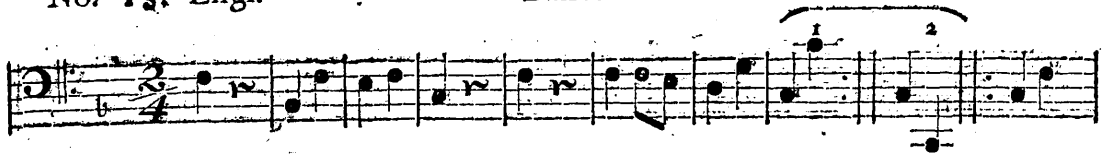
No. 18. Engl.

Violino Secondo.



No. 13. Engl.

Basso.



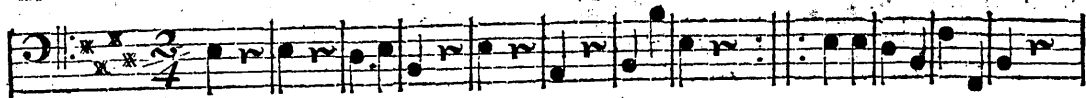
No. 14. Engl.

Basso.



No. 15. Engl.

Basso.

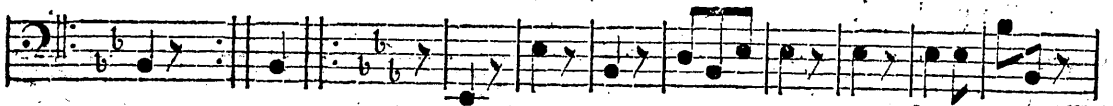




No. 16. Engl.

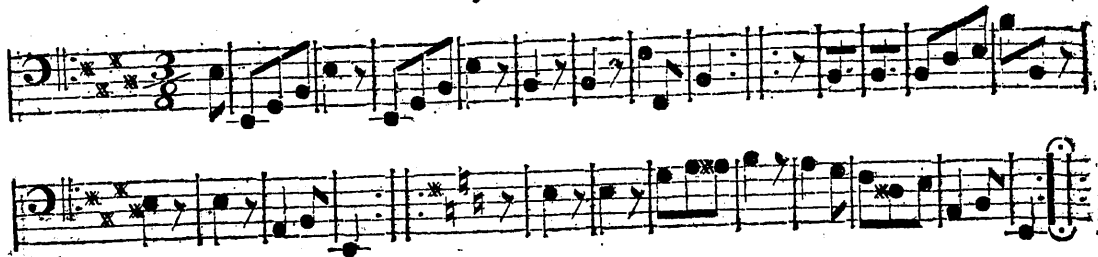
Basso.

Op. 11 - 101



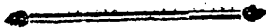
No. 17. Engl.

Basso.



No. 18. Engl.

Basso.



No. 13. Engl.

Clarinetto Primo in B.

Musical score for No. 13, Clarinetto Primo in B. The score consists of two staves. The first staff begins with a treble clef, a 2/4 time signature, and a key signature of one flat (B-flat). It features two measures of rests, each marked with the number '8', followed by a series of eighth and sixteenth notes with slurs and accents. The word 'Solo.' is written below the first staff. The second staff continues the melodic line with similar rhythmic patterns and concludes with a final whole note chord.

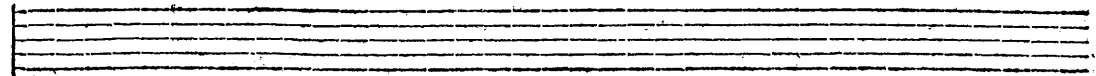
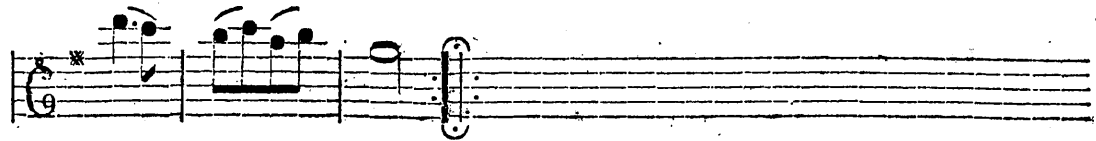
No. 14. Engl.

Clarinetto Primo in B.

Musical score for No. 14, Clarinetto Primo in B. The score consists of two staves. The first staff begins with a treble clef, a 3/8 time signature, and a key signature of one flat (B-flat). It features a series of eighth notes with slurs and accents, including a measure with a double sharp symbol. The word 'Solo.' is written below the first staff. The second staff continues the melodic line with similar rhythmic patterns and concludes with a final whole note chord. The letter 'D' is written below the second staff.

No. 15. Engl.

Clarinetto Primo in A.



No. 16. Engl.

Clarinetto Primo in B.

Musical score for Clarinet in B, No. 16. Engl. The score is written on four staves in 3/8 time, with a key signature of one flat (B-flat). The first staff begins with a treble clef, a 3/8 time signature, and a key signature of one flat. It contains a sequence of eighth and sixteenth notes, with a fermata over the first measure and a '7' above it. The second staff continues the melody with slurs and fingerings (1, 2) indicated above notes. The word 'Solo.' is written below the second staff. The third staff continues the melodic line with slurs and fingerings (7, 7) above notes. The fourth staff concludes the piece with a few notes and a double bar line.

No. 17. Engl.

Flaute Primo.



No. 18. Engl.

Clarinetto Primo in B.



## No. 13. Engl.

## Clarinetto Secondo in B.

Musical score for No. 13, Clarinetto Secondo in B. The score consists of two staves. The first staff begins with a treble clef, a 2/4 time signature, and a key signature of one flat (B-flat). It features two measures of whole rests, each marked with an '8' above it. The piece then begins with a melodic line starting on G4, moving up to A4, B4, and C5, then descending. The word "Solo." is written below the first measure of the melody. The second staff continues the melody, ending with a double bar line and repeat dots.

## No. 14. Engl.

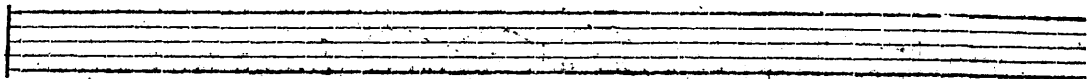
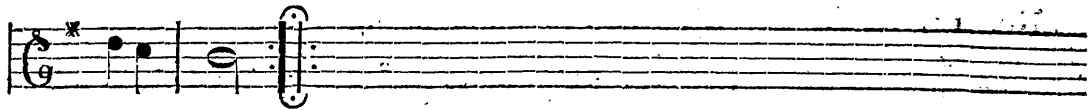
## Clarinetto Secondo in B.

Musical score for No. 14, Clarinetto Secondo in B. The score consists of two staves. The first staff begins with a treble clef, a 3/8 time signature, and a key signature of one flat (B-flat). It features a melodic line starting on G4, moving up to A4, B4, and C5, then descending. The word "Solo." is written below the first measure of the melody. The second staff continues the melody, ending with a double bar line and repeat dots.



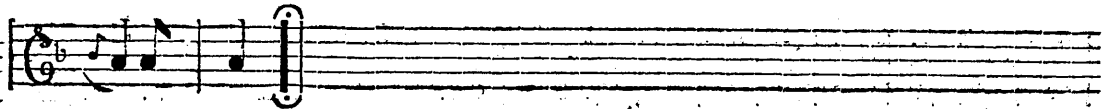
No. 15. Engl.

Clarinetto Secondo in A.



No. 16. Engl.

Clarinetto Secondo in B.



No. 17. Engl.

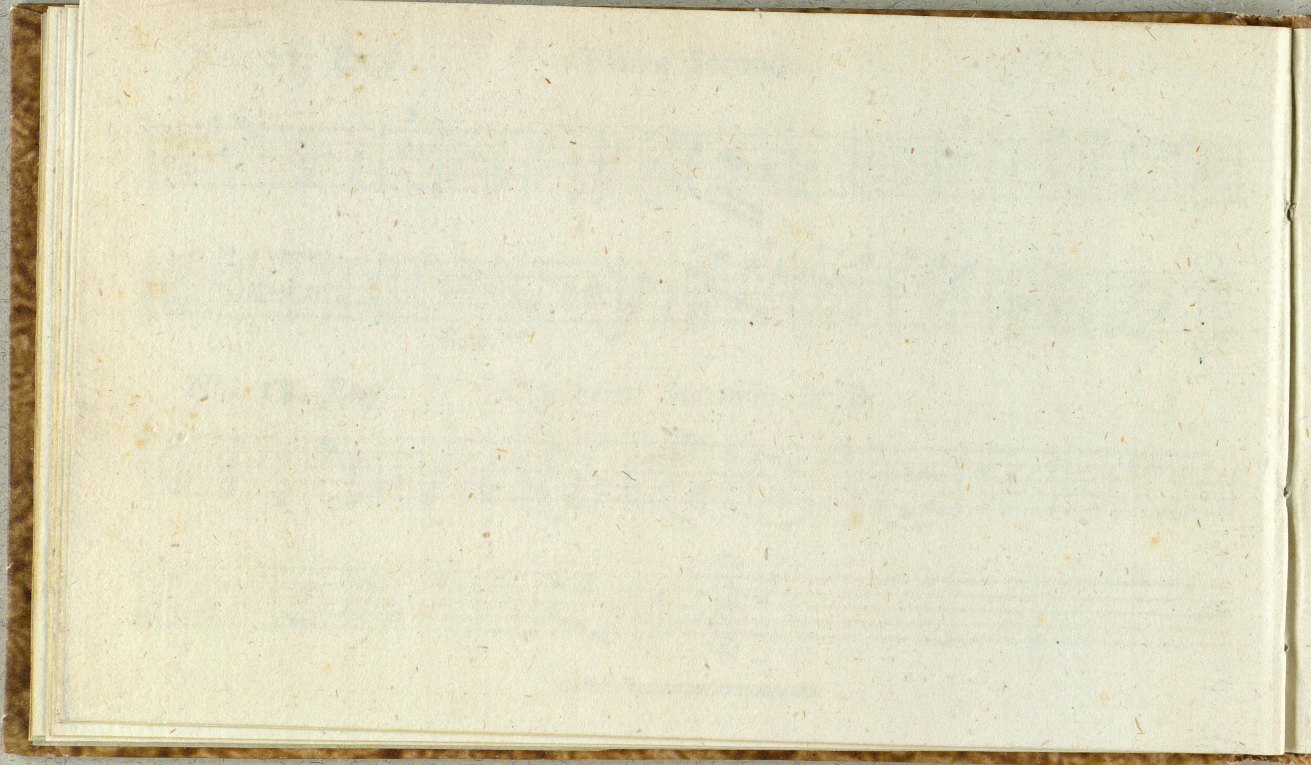
Flaute Secondo.

Musical score for Flute No. 17, consisting of two staves. The first staff begins with a treble clef, a key signature of one sharp (F#), and a 3/8 time signature. It contains several measures of music, including a triplet of eighth notes marked with a '3' above the staff. The second staff continues the melody and includes a 'Solo.' marking below the first few measures. The piece concludes with a double bar line and repeat dots.

No. 18. Engl.

Clarinetto Secondo in B.

Musical score for Clarinet No. 18, consisting of two staves. The first staff begins with a treble clef, a key signature of one sharp (F#), and a 3/8 time signature. It contains several measures of music, including a triplet of eighth notes marked with a '3' above the staff. The second staff continues the melody and concludes with a double bar line and repeat dots.



mu 6702.0634



